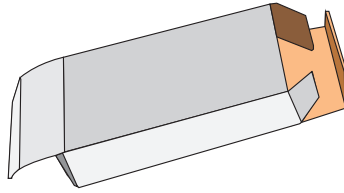




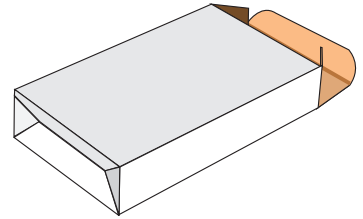
CARTON STYLES

Examples of our most popular styles



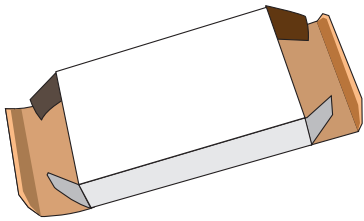
Reverse Tuck

Ends tuck into box from opposite directions. Most economical layout due to tight nesting.



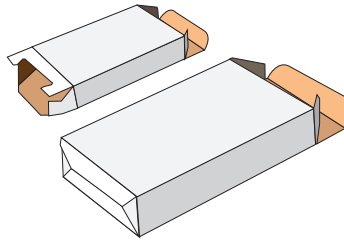
Tuck Top / Auto Bottom

Also called “crash-lock” bottom. Bottom pops into place automatically, increasing filling speeds in hand fulfillment operations.



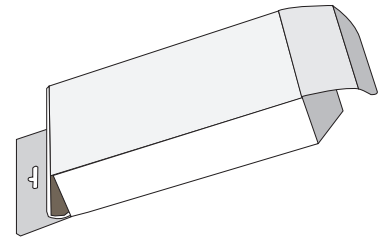
Straight Tuck

Ends tuck into the box from the same direction. Presents a more finished appearance on the face.



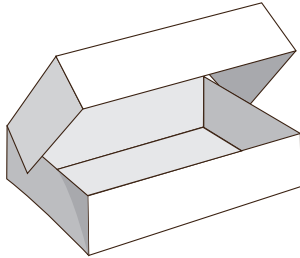
Snap Lock Bottom

Also called a 1-2-3 bottom. Bottom is assembled with overlapping tuck flaps for additional strength.



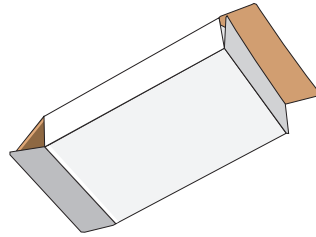
Straight Tuck with Header

If a carton is to hang on a rack, the hanger extension requires the carton to be a straight tuck.



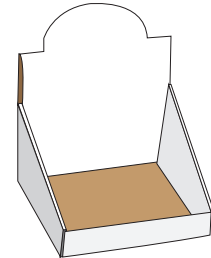
Infold Trays

Glued style that ships flat and then pops into a carton. Ideal for applications like food, stationery, or clothing.



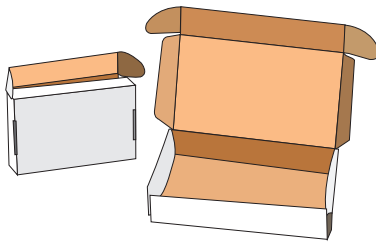
Seal End

Designed for use with high-speed automated filling equipment. Ends are glued by the machine during fulfillment.



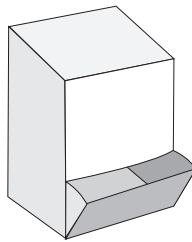
Counter Top Display

Counter top displays are frequently designed as the shipper carton as well so they serve a dual purpose; they carry and display the product for you.



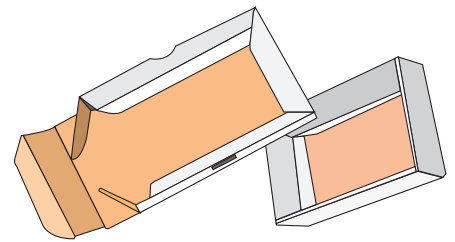
Tab Lock Tray with Lid

Inexpensive style to assemble as it requires no gluing. Ideal for presenting applications like sample or media kits.



Dispenser

Display and dispenser styles are numerous. This is a popular style because the carton can be loaded and reloaded from the top for continuous stocking.



Simplex

Economical 2-piece style. No gluing required, making it easy to assemble. Also stores and ships flat.